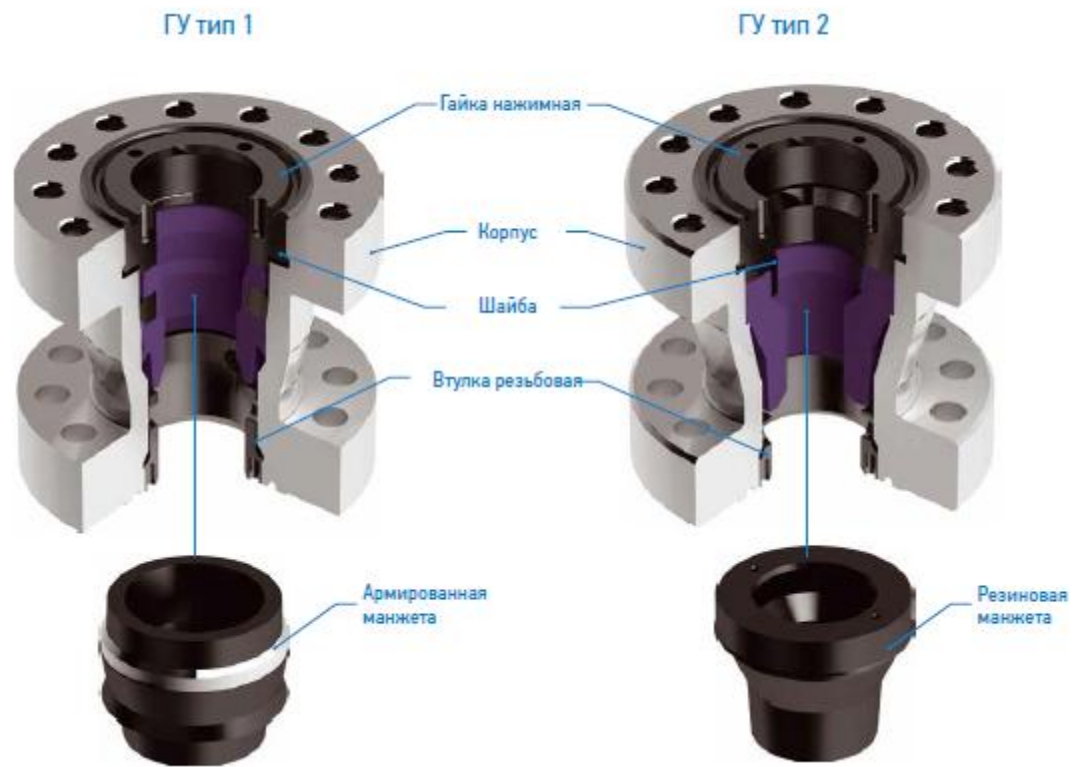
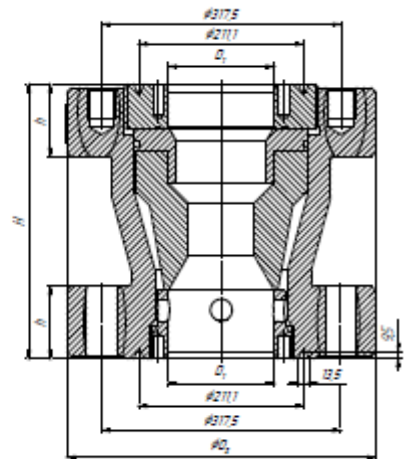
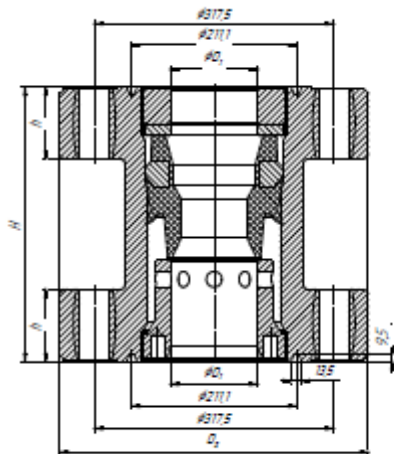


Wellhead sealers (THROUGH FLUSH SPOOLS)



GU type 1

GU type 2



1. Pressure nut
2. Case
3. Washer
4. Threaded bushing
5. Armored collar/Rubber collar

Basic parameters		ГУ 180x21. НКТ 73	ГУ 180x35. НКТ 73	ГУ 180x21. НКТ 89	ГУ 180x35. НКТ 89	ГУ 180x21. НКТ 114	ГУ 180x35. НКТ 114
Maximum (operating) pressure applied to the P _u sealing unit, MPa, not more than		21	35	21	35	21	35
Working medium		некорозійна, К1, К2					
Outer diameter D, mm		380	395	380	395	380	395
Height H, mm	Type 1	260	350	260	350	300	352
	Type 2	300		300		340	
Full flange thickness h, mm		64	92	64	92	64	92
Diameter for the coupling to be pulled through D1, mm	Type 1	94		112		136	
	Type 2	98		116		145	
Number of apertures for pins, n		12					
Diameter of apertures for pins, mm		32/28*	39**	32/28*	39**	32/28*	39**
Diameter of pipes to be sealed, mm		73		89		114	
Width of the notch for the washer, mm		12	13,5	12	13,5	12	13,5
Washer under GOST 28919-91		П45	П46	П45	П46	П45	П46

* Special design of the lower flange provides for installation of the sealer on flanges having standard size of 180x21 and 180x14 under GOST 28919 using appropriate fitting elements.

** Connecting dimensions of the lower flange of the sealer of 180x35 provide for its installation on the tubing string head having standard size of 180x21 on the condition of using a special adapting washer and fixture elements.

***Example of reference designation:**



- ГУ – Wellhead sealer
- 1 - Sealer type
- 180 – Port area, mm
- 35 – Operating pressure, MPa
- НКТ89 – Designation of the thread for the pipe to be pulled
- К1 - Corrosion resistance category